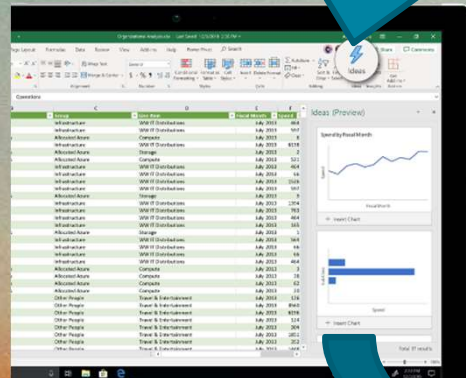




# Medische informatie dashboards voor de (zorg)professional

*Dr. Joris van Dijk, MSc*

Bedrijfs- en medische informatie voor elke zorgprofessional beschikbaar maken om **continu te verbeteren** o.b.v. (real-time) patiënt ervaringen, kwaliteit, volume en kostendata



# Nog geen 15 jaar geleden .....



- *Blauwse, Communist.*  
*Centri.*

= *Con. - potentie\**

= *Streefke -*  
*- aetologie*  
*- therapie*



30%

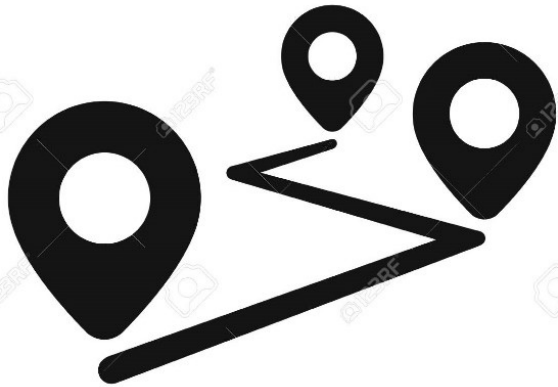
70%



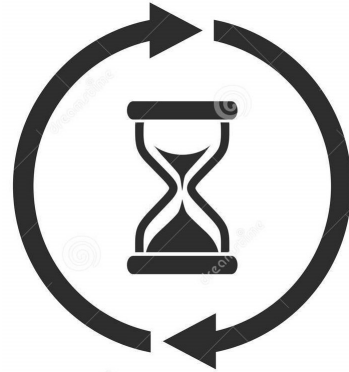
Verrichtingen en financiën

Decursus

# Indicatoren



De patiënten reis



Procesindicatoren



Zorguitkomsten



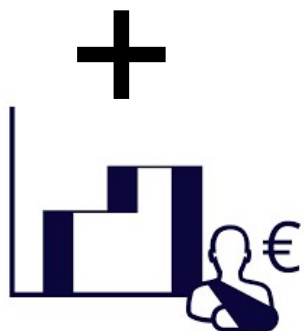
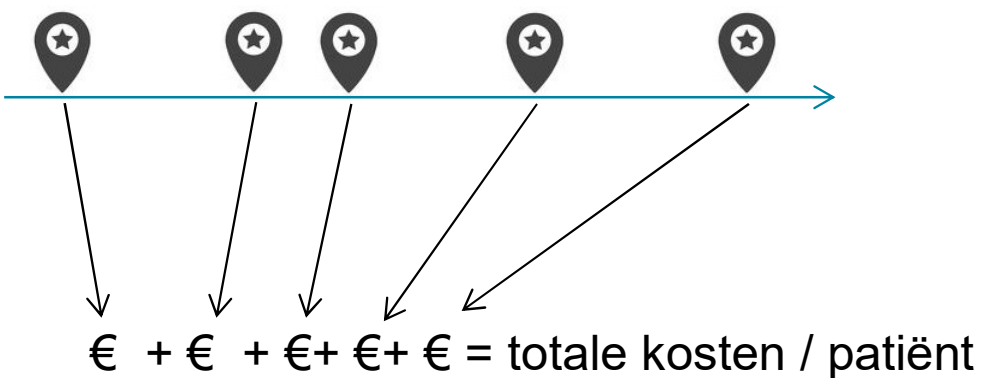
De DBCs - reis



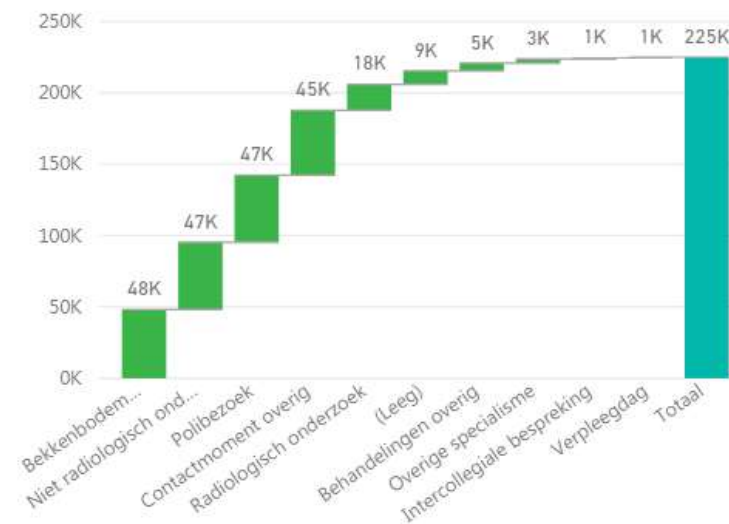
Infecties/complicatie/....

# Kosten van een patiënt-traject

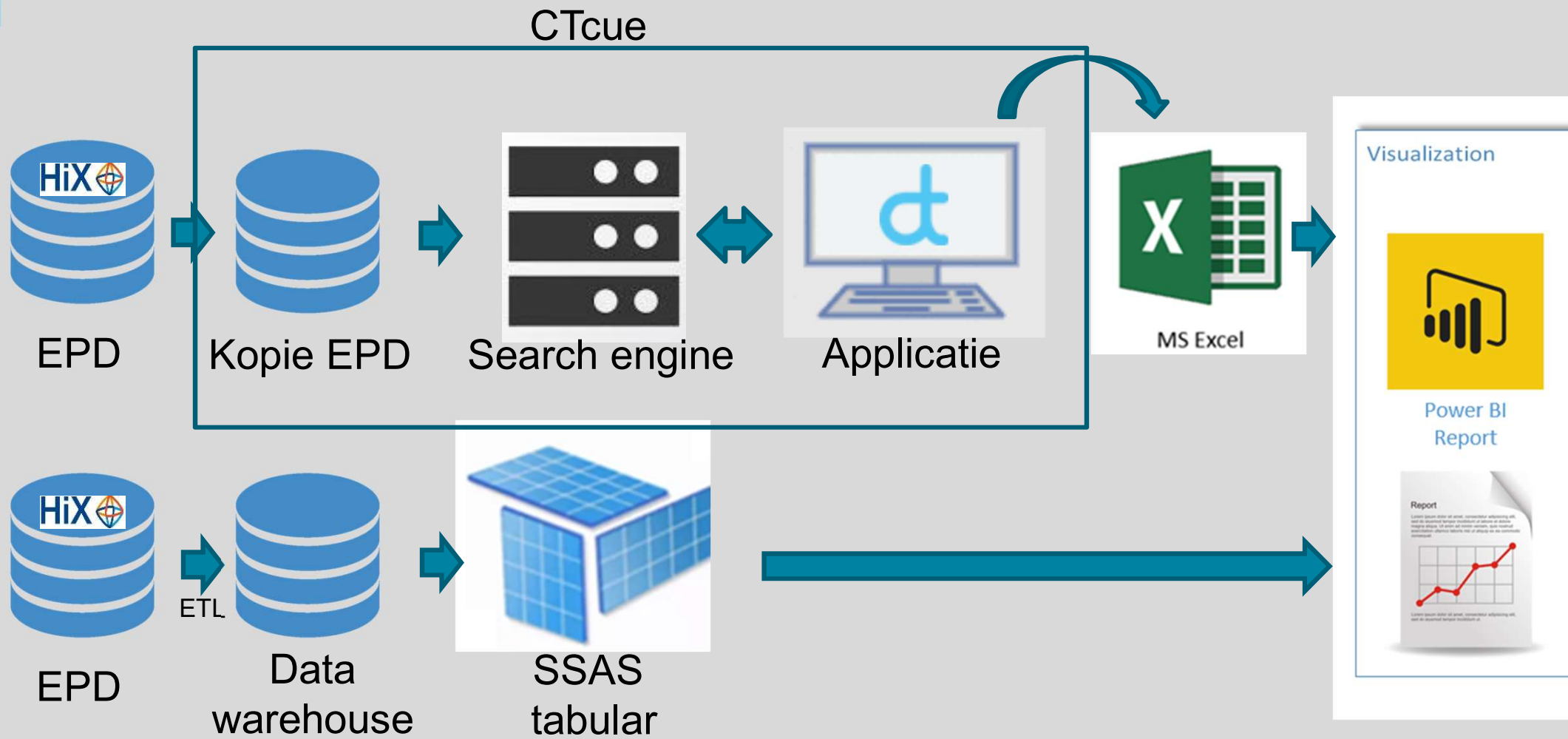
Zorgtraject:



Opbouw kosten voor hele traject



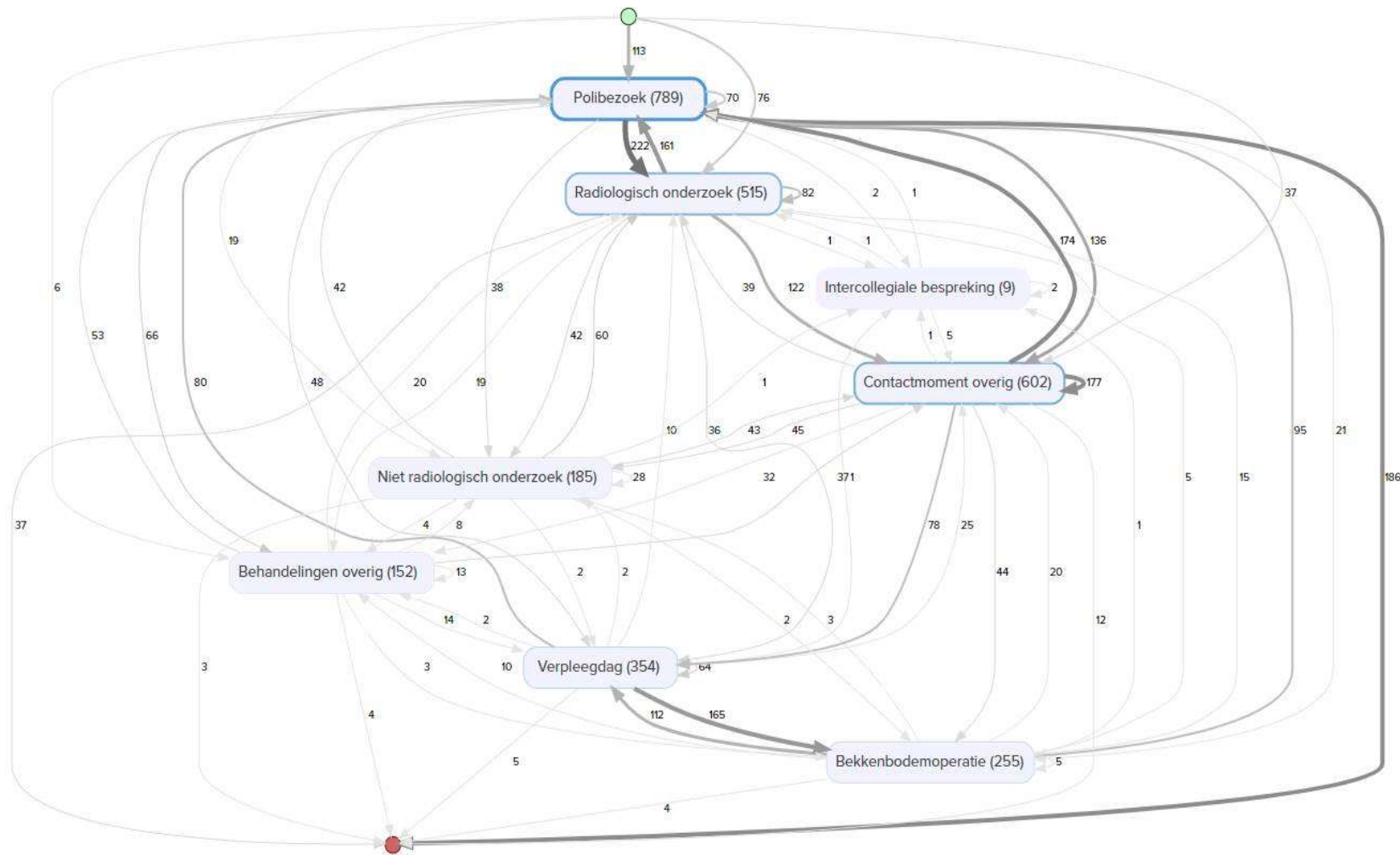
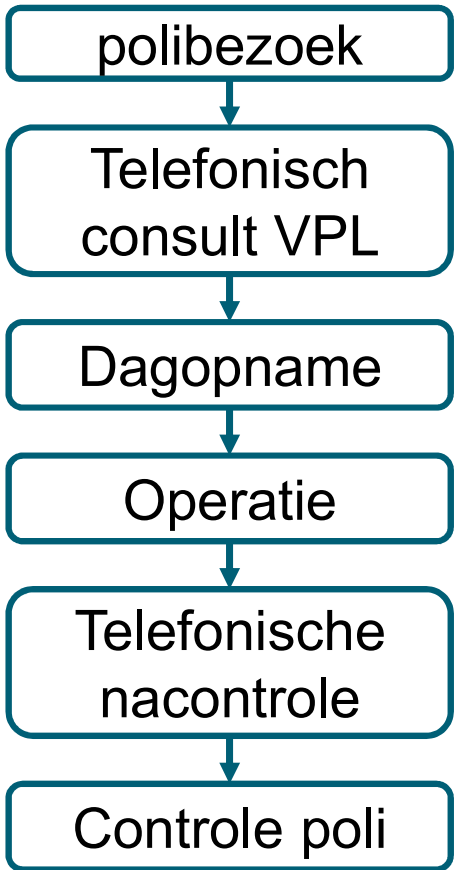
# Data flow



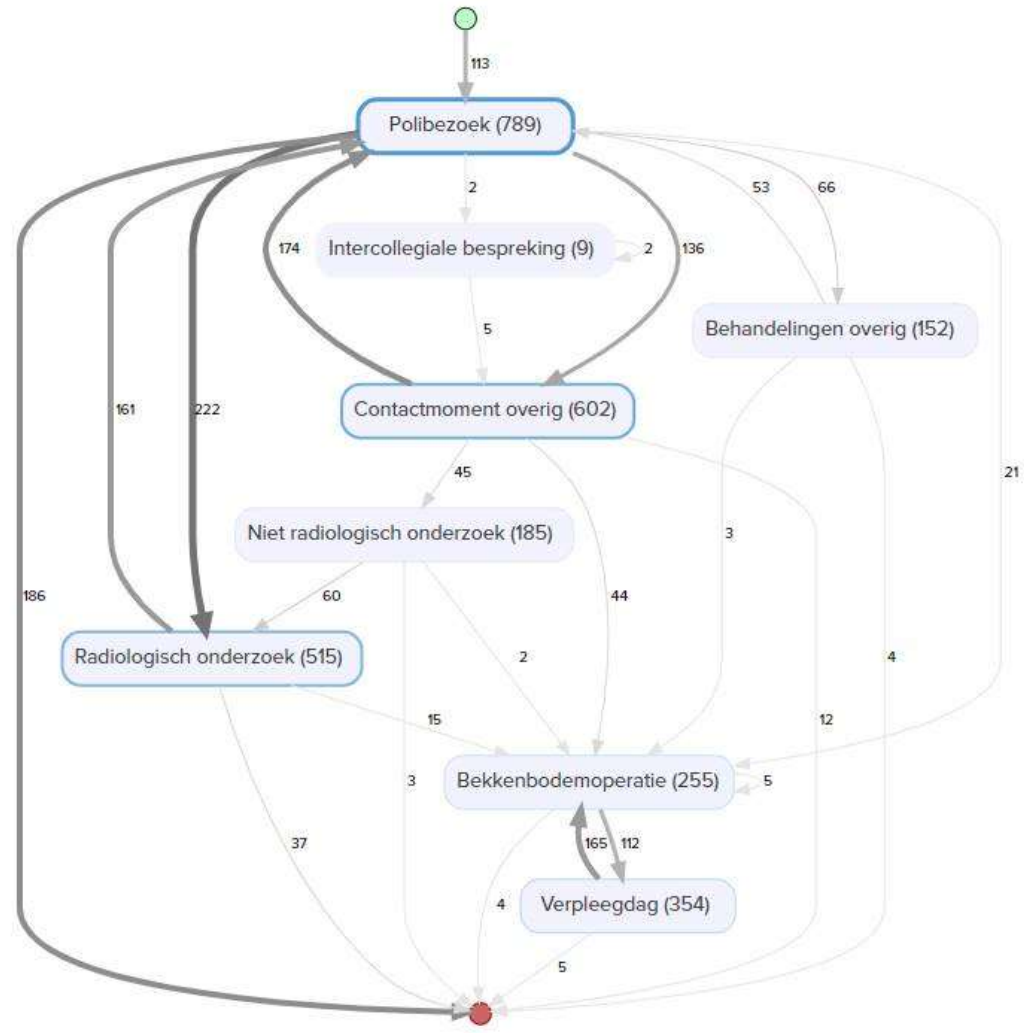
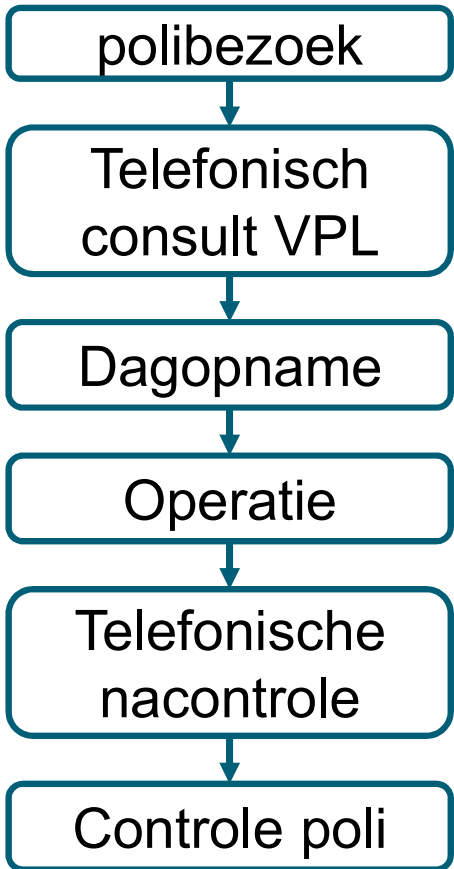




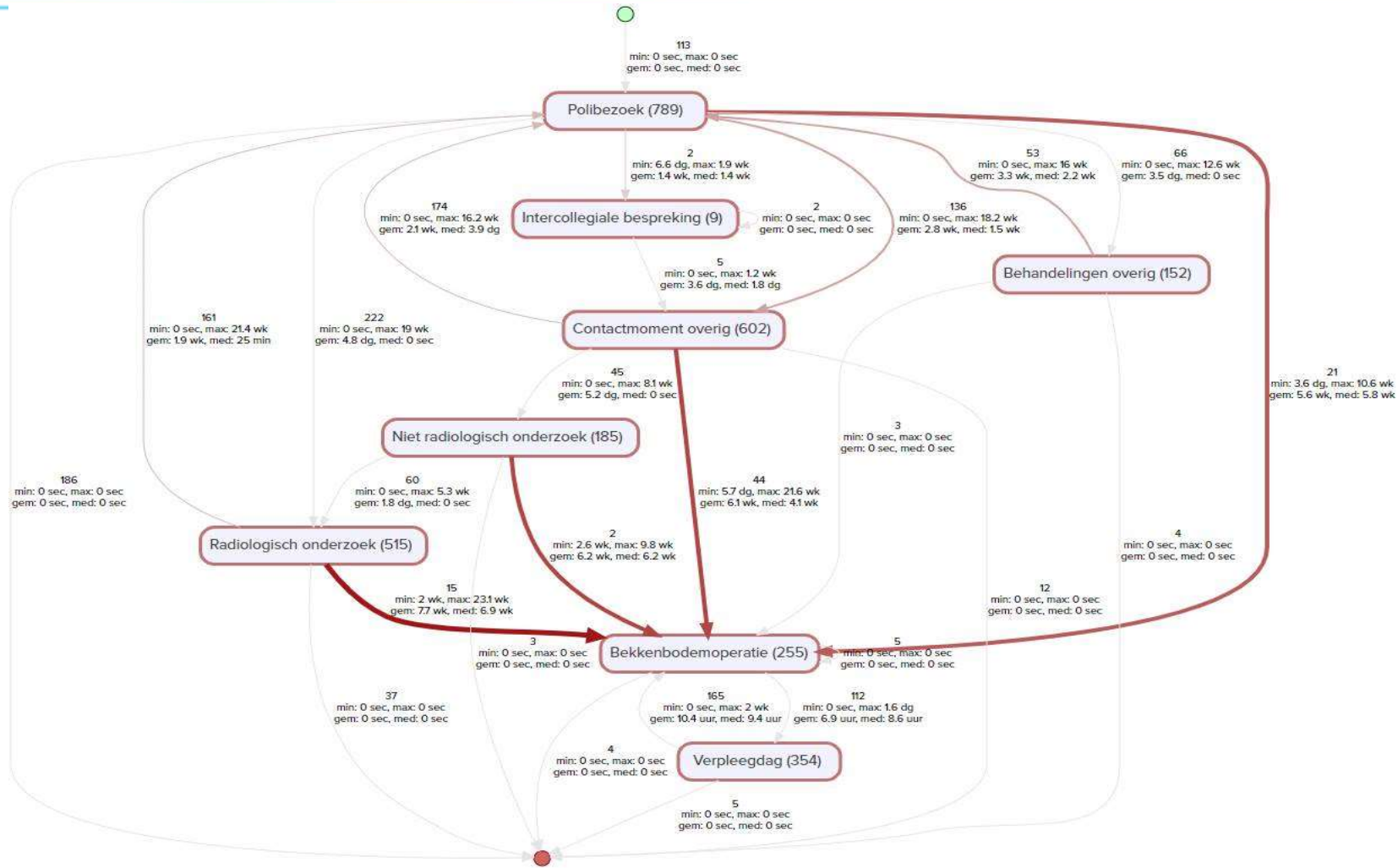
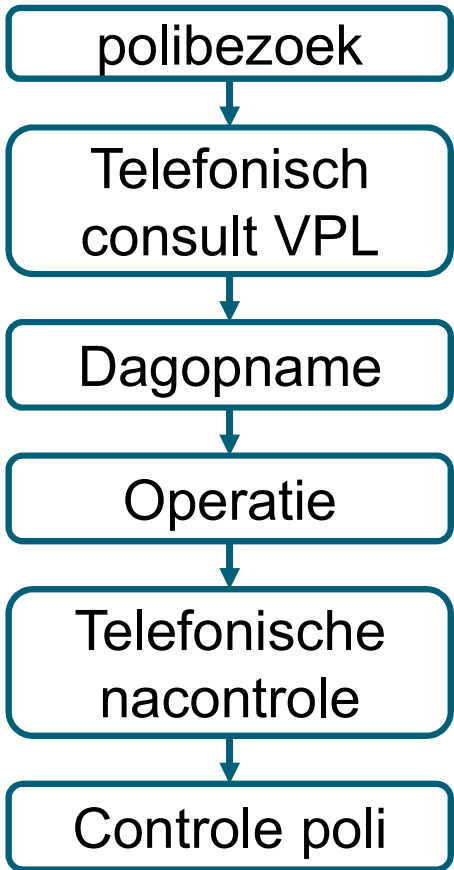
# Proces mining

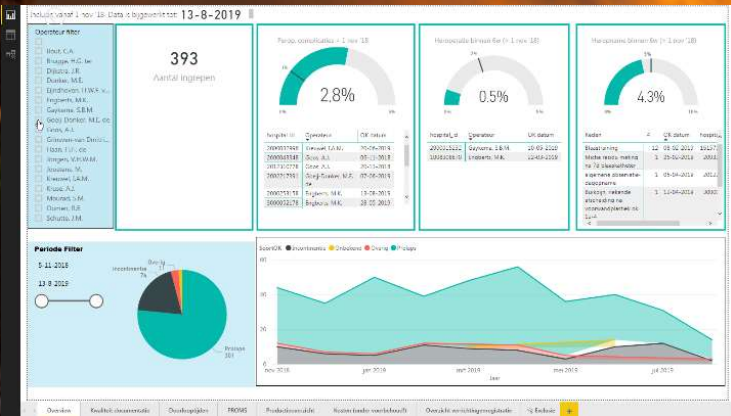


# Proces mining



# Proces mining

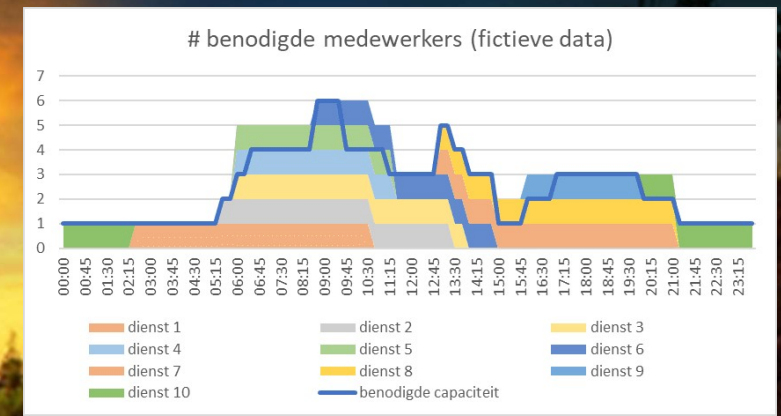




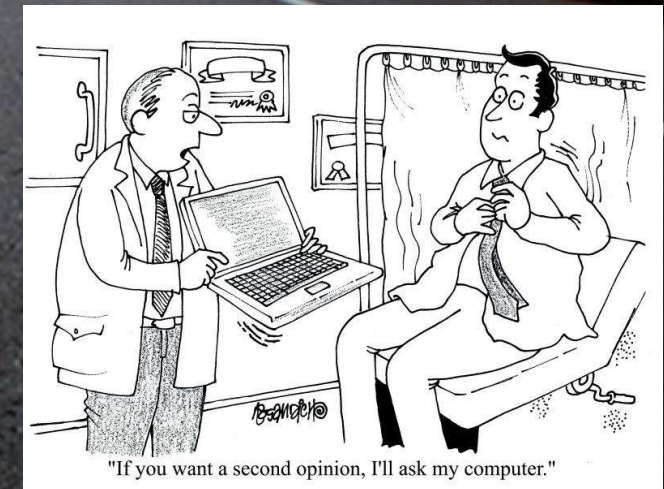
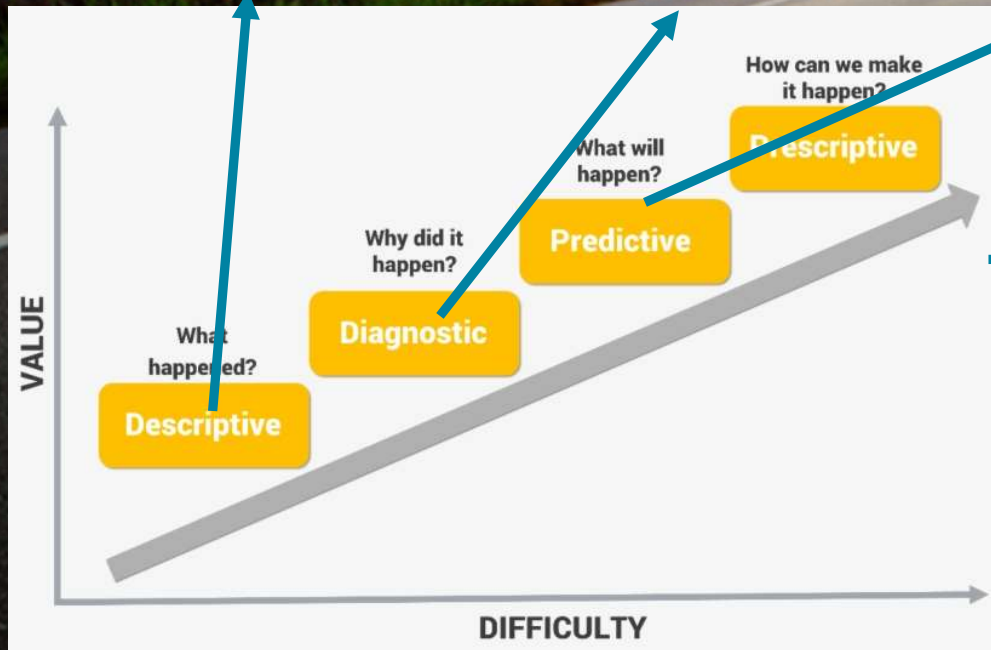
Self service: medical information



Benchmarken  
proces en kwaliteit



(Capaciteits) management



Decision support

# Dank aan:

Saskia Abbes

Joep Dille

Jan Paul Ottervanger

Hugo van Eijndhoven

Job Eijsink

Marieke de Boer

Rutger Trimbos

Marian Engberts



[j.d.vandijk@isala.nl](mailto:j.d.vandijk@isala.nl)